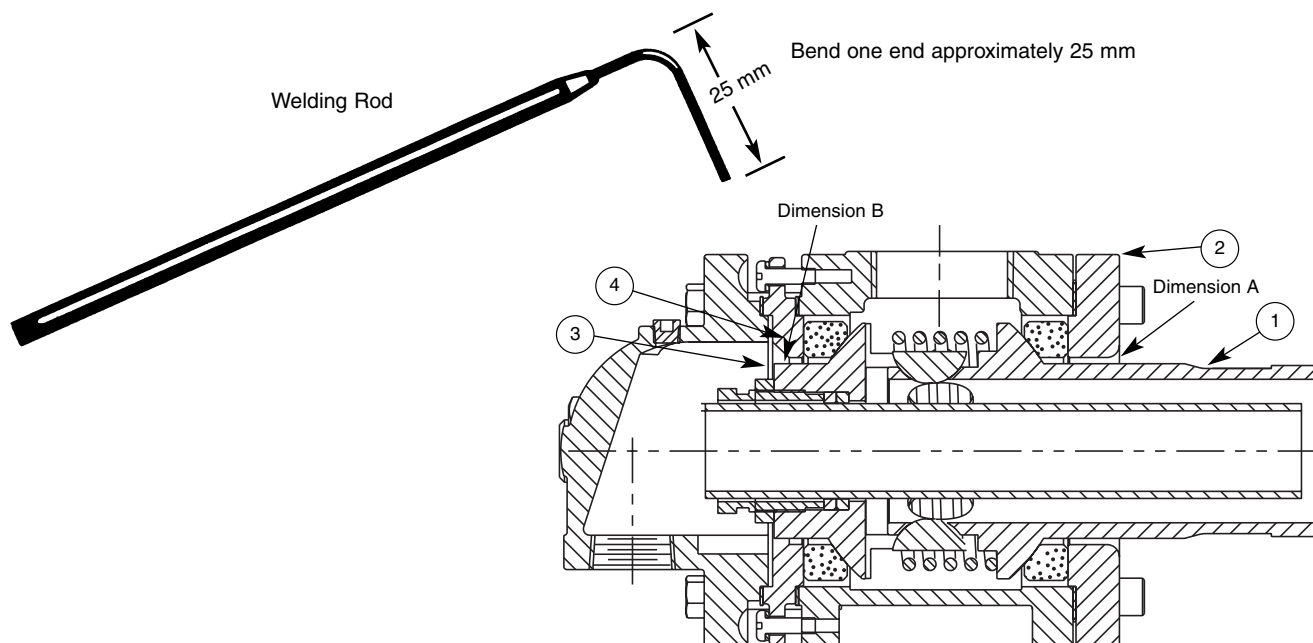


Aligning Johnson Joints



NOTE: Please follow your company's safety procedures whenever working on Kadant Johnson Rotary Joints and read all of the instructions completely before proceeding.

Please refer to the assembly drawings supplied with your Kadant Johnson Rotary Joint for part identification. If you have any further questions, please contact your Representative or Kadant Johnson.

After the joint is attached to the journal and loosely bolted to the support bracket, you should check the alignment with a simple gauge made from common welding rod.

On the table at the right, you will find the gauge diameter listed for each size rotary joint. As shown above, bend one end 90° approximately 25 mm from the end.

Then using the appropriate size gauge, check the clearance around the nipple tube (1) where it passes through the body opening (2) followed by a check where the thrust collar (3) protrudes through the assembly plate (4).

Since both parts (nipple tube and thrust collar) rotate, the body housing must be centered around the rotating components. To achieve this alignment may require shimming or readjustment of the rotary joint support mechanism.

Dimensions are for reference only and subject to change. Certified drawings are available on request.

Size	A (Inboard) Nipple Wear Plate	Gauge Size	B (Outboard) Thrust Collar/ Assembly Plate	Gauge Size
3/4" - 2200	1,60	0,80	2,40	1,60
1" - 2300	2,40	1,60	2,40	1,60
1-1/4" - 2400	1,60	0,80	2,40	1,60
1-1/2" - 2500	4,80	3,20	4,00	3,20
2" - 2550	3,20	2,40	3,20	2,40
2-1/2" - 2600	3,20	2,40	4,00	3,20
3" - 2700	3,20	2,40	3,20	2,40
3-1/2" - 2750	3,20	2,40	8,00	6,35
4" - 2800	6,35	4,80	6,35	4,80
5" - 950	12,70	9,50	11,10	9,50
6" - 1000	6,35	4,80	8,75	4,80
7-1/2" - 1075	3,20	2,40	12,70	11,10
8" - 1100	6,35	4,80	6,35	4,80

The Kadant Johnson Warranty

Kadant Johnson products are built to a high standard of quality. Performance is what you desire: that is what we provide. Kadant Johnson products are warranted against defects in materials and workmanship for a period of one year after date of shipment. It is expressly understood and agreed that the limit of Kadant Johnson's liability shall, at Kadant Johnson's sole option, be the repair or resupply of a like quantity of non-defective product.

